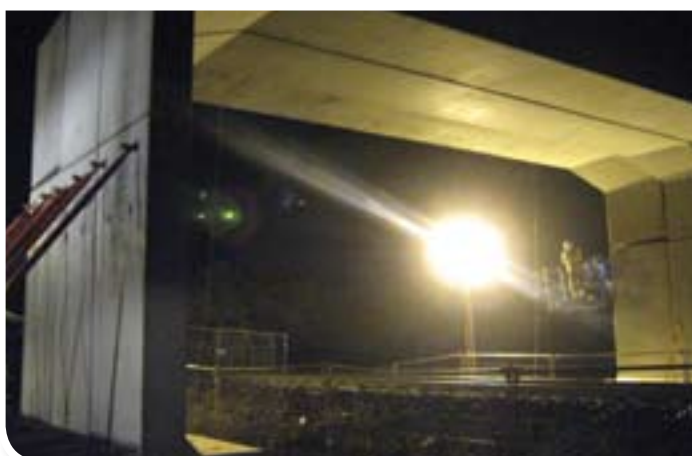


IRISH RAIL OVERBRIDGE OBT30F, MILLSTREET, CORK



ABM Erect a 14.5 Metre Span Structure in an Overnight Possession

ABM Bridge Systems were the suppliers to P.J. Hegarty & Sons, Cork, of a **14.5 m span x 6.0 m rise** x 5.25 metre long, Matière Opti Cadre Portal Structure, Supplied in 3 no. 1.75 m long units, for Irish Rail. This structure was installed on Valentines Night February 14th 2009, during an overnight railway possession, between 23.00 Hours Saturday Night and 6.00 Hours Sunday Morning.

[CLICK HERE FOR MORE DETAILS](#) 

THE PARK BRIDGE ARCH STRUCTURE, NORTHERN IRELAND



ABM is Highly Commended for Their Momentous Efforts

ABM Bridge Systems have received a number of commendations for their momentous efforts in delivering and installing the CM4 precast arch units for the Park Bridge Project, in Derry, on Friday 10th October 2008.

[CLICK HERE FOR MORE DETAILS](#) 

A3 HINDHEAD BYPASS, SURREY



ABM Successfully Installs its Fourth and Final Structure

ABM Bridge Systems has successfully installed its fourth and final structure for Balfour Beatty Civil Engineering on the Highways Agency's A3 Hindhead Bypass scheme in Surrey.

[CLICK HERE FOR MORE DETAILS](#) 

GET THE FULL STORY AT www.abmeurope.com